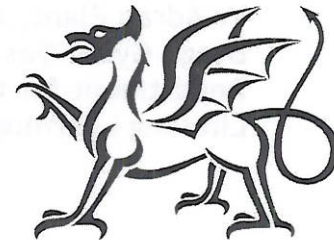


Yr Adran Plant, Addysg,
Dysgu Gydol Oes a Sgiliau
Department for Children, Education,
Lifelong Learning and Skills



Llywodraeth Cynulliad Cymru
Welsh Assembly Government

Received 22.10.08

October 2008

Dear colleague

As you know the Qualifications, Curriculum and Learning Improvement (QCLI) Group has undergone significant organisational change over the last couple of years. We have still to fill some vacancies and adjust some responsibilities. However, from meetings and discussions I know that information about responsibilities, positions and contacts would be welcomed. I am therefore pleased to attach such information.

I hope that you find this useful. If you would like further copies or have any comments please contact Lisa McDougall (lisa.mcdougall@wales.gsi.gov.uk / 029 2037 5419).

Yours sincerely

A handwritten signature in black ink, appearing to read 'Mike Clancy'.

Mike Clancy
Group Director
Qualifications, Curriculum and Learning Improvement

VW000524

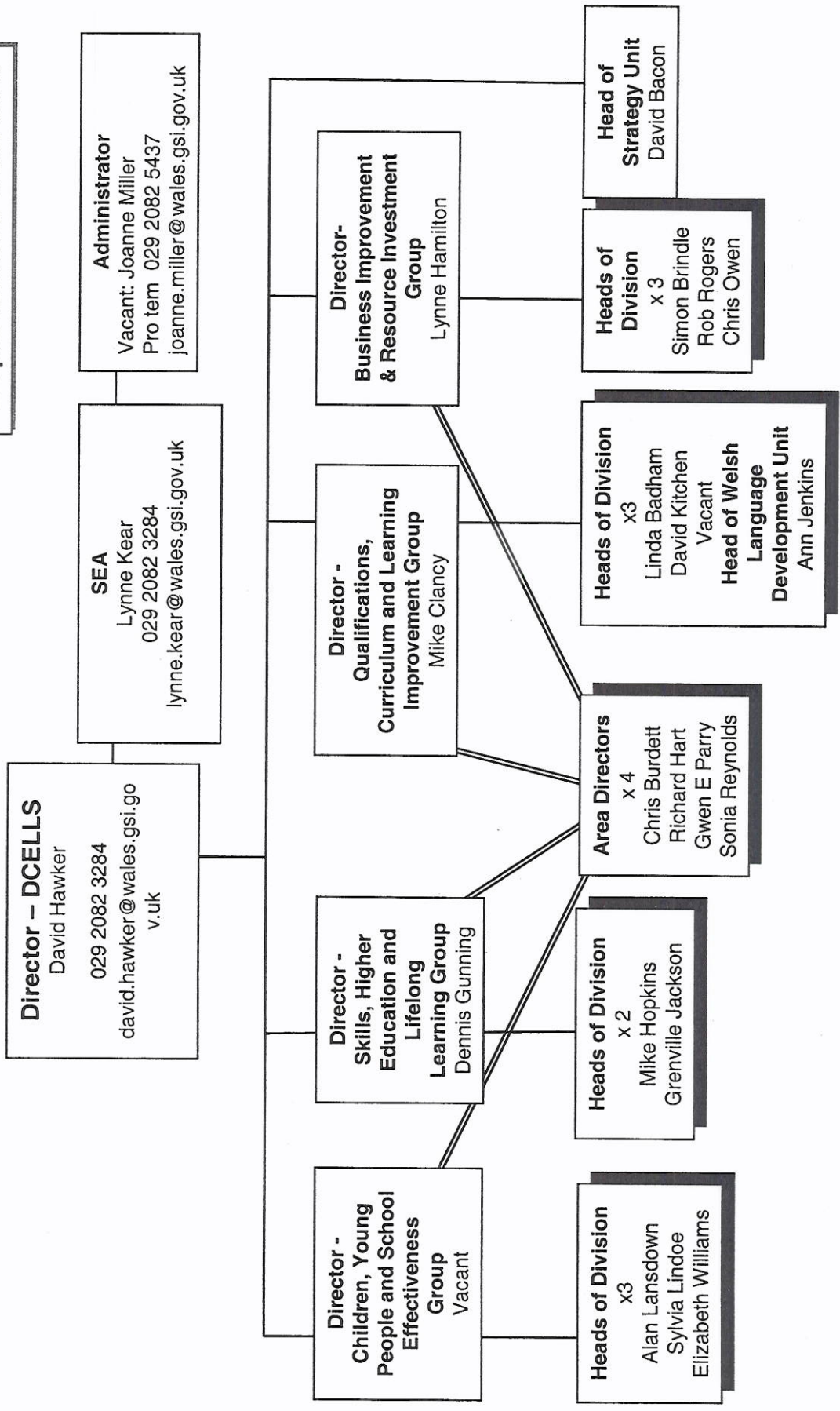


BUDDSODDWR MEWN POBL
INVESTOR IN PEOPLE

Adeiladau'r Castell/Castle Buildings
Stryd Womanby/Womanby Street
CAERDYDD/CARDIFF
CF10 1SX

Ffôn/Tel: 029 2037 5403
Ffacs/Fax: 029 20375 547
E-bost/E-mail : mike.clancy@wales.gsi.gov.uk

DCELLS
Departmental Overview



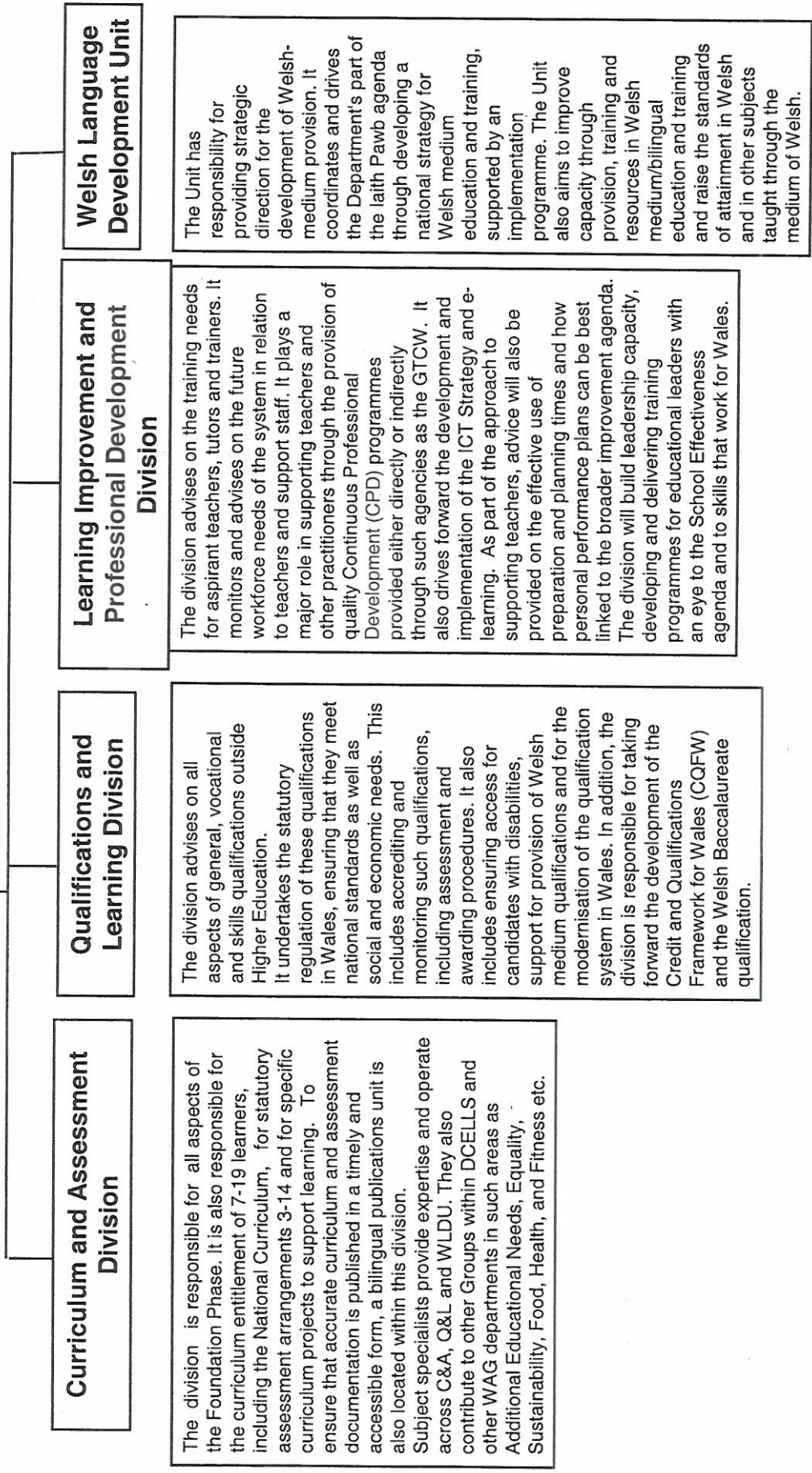
QCLI - Group Overview

EA
 Lisa McDougall
 02920 375419
 lisa.mcdougall@wales.gsi.gov.uk

Group Manager
 Ben Wong (Acting)
 029 2037 5464
 ben.wong@wales.gsi.gov.uk

Director - Qualifications, Curriculum and Learning Improvement Group
 Mike Clancy
 029 2037 5403
 mike.clancy@wales.gsi.gov.uk

Area Director - South Wales



The division is responsible for all aspects of the Foundation Phase. It is also responsible for the curriculum entitlement of 7-19 learners, including the National Curriculum, for statutory assessment arrangements 3-14 and for specific curriculum projects to support learning. To ensure that accurate curriculum and assessment documentation is published in a timely and accessible form, a bilingual publications unit is also located within this division. Subject specialists provide expertise and operate across C&A, Q&L and WLDU. They also contribute to other Groups within DCELLS and other WAG departments in such areas as Additional Educational Needs, Equality, Sustainability, Food, Health, and Fitness etc.

Qualifications and Learning Division

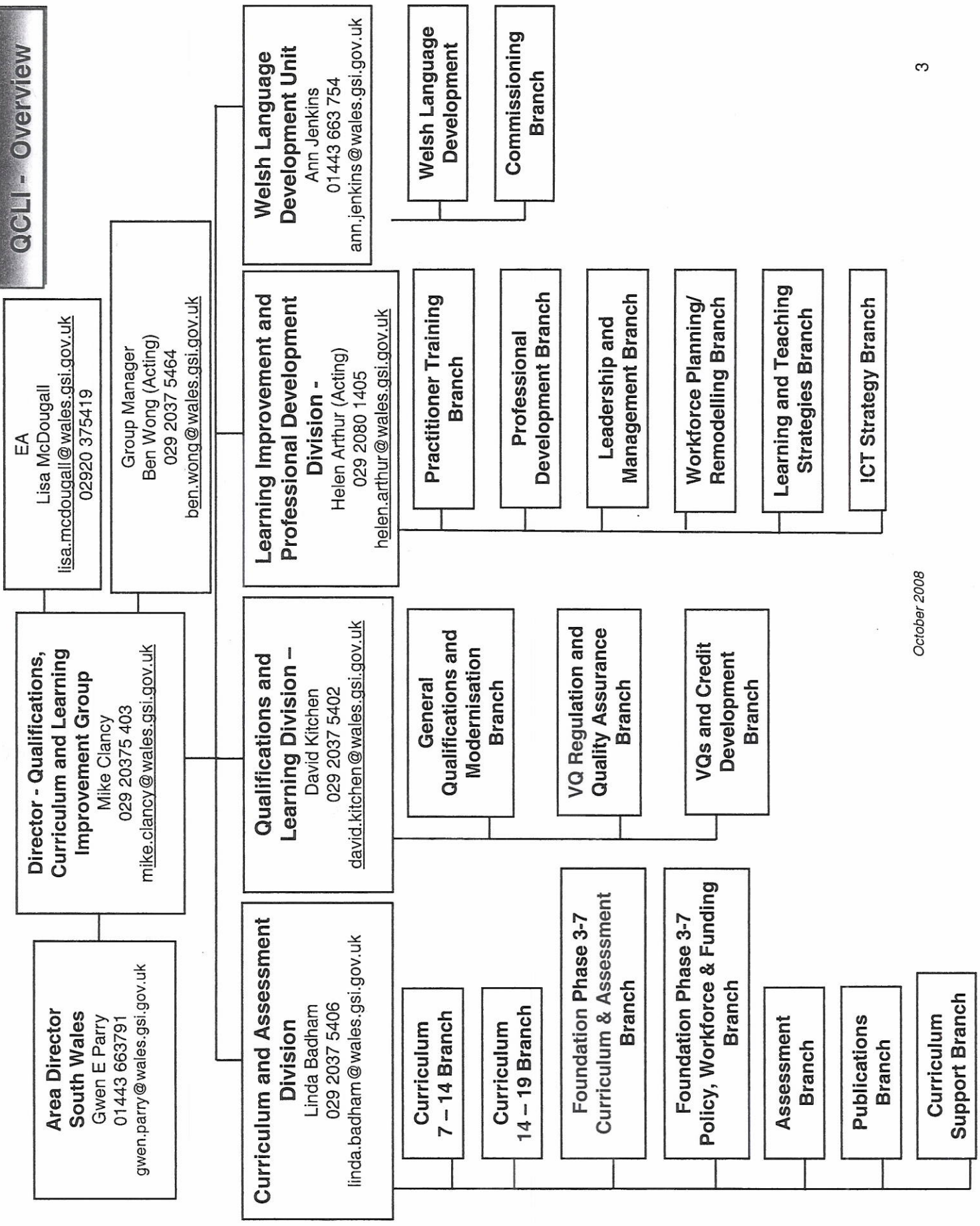
The division advises on all aspects of general, vocational and skills qualifications outside Higher Education. It undertakes the statutory regulation of these qualifications in Wales, ensuring that they meet national standards as well as social and economic needs. This includes accrediting and monitoring such qualifications, including assessment and awarding procedures. It also includes ensuring access for candidates with disabilities, support for provision of Welsh medium qualifications and for the modernisation of the qualification system in Wales. In addition, the division is responsible for taking forward the development of the Credit and Qualifications Framework for Wales (CQFW) and the Welsh Baccalaureate qualification.

Learning Improvement and Professional Development Division

The division advises on the training needs for aspirant teachers, tutors and trainers. It monitors and advises on the future workforce needs of the system in relation to teachers and support staff. It plays a major role in supporting teachers and other practitioners through the provision of quality Continuous Professional Development (CPD) programmes provided either directly or indirectly through such agencies as the GTCW. It also drives forward the development and implementation of the ICT Strategy and e-learning. As part of the approach to supporting teachers, advice will also be provided on the effective use of preparation and planning times and how personal performance plans can be best linked to the broader improvement agenda. The division will build leadership capacity, developing and delivering training programmes for educational leaders with an eye to the School Effectiveness agenda and to skills that work for Wales.

Welsh Language Development Unit

The Unit has responsibility for providing strategic direction for the development of Welsh-medium provision. It coordinates and drives the Department's part of the laith Pawb agenda through developing a national strategy for Welsh medium education and training, supported by an implementation programme. The Unit also aims to improve capacity through provision, training and resources in Welsh medium/bilingual education and training and raise the standards of attainment in Welsh and in other subjects taught through the medium of Welsh.



Head of Curriculum & Assessment Division

Linda Badham
029 2037 5406
linda.badham@wales.gsi.gov.uk

Administrator

Kimberley Harding
029 2037 5479
kimberley.harding@wales.gsi.gov.uk

External subject experts – See Annex 1

Curriculum 7 – 14 Branch –
Julie Addis (Acting)
029 2037 5476
Julie.addis@wales.gsi.gov.uk

Keeping under review and revising the National Curriculum Orders, the Personal and Social Education Framework and the National Exemplar Framework for RE.
Developing essential guidance to support the implementation of the school curriculum.
Developing curriculum support material for the least and most able pupils and others with additional educational needs.

Curriculum 14 – 19 Branch
Temporary contact - Robert M Bailey
029 2037 5484
robert.bailey2@wales.gsi.gov.uk

Keeping under review and revising the school curriculum 14-19 ensuring that curriculum requirements align with Welsh Baccalaureate, other qualifications and with Learning Pathways 14-19.
Developing guidance on Learning Pathways; Careers and the World of Work; and monitoring the operation of Wales, Europe and the World Framework.

Foundation Phase 3-7 Curriculum & Assessment Branch
Linda Mary Davies
029 2037 5471
linda.davies@wales.gsi.gov.uk

Developing and keeping under review the Foundation Phase Framework (3-7) for curriculum and assessment, and developing essential guidance to support the implementation of the Framework.

Foundation Phase 3-7 Policy, Workforce & Funding
Jon Hawkins
029 2082 6528
jon.hawkins@wales.gsi.gov.uk

Delivering improved learning outcomes for children aged 3-7 through implementation of the Foundation Phase of Learning.

Assessment Branch
Robert M H Bailey
029 2037 5484
robert.bailey2@wales.gsi.gov.uk

Keeping under review the statutory assessment arrangements for Foundation Phase and Key Stages 2 and 3. Developing essential guidance to support the implementation of revised assessment arrangements.
Developing skills assessment materials and profiles for use in Year 5.

Publications Branch
Ann Evans
029 2037 5421
ann.evans3@wales.gsi.gov.uk

Publishing and distributing to schools and other stakeholders the range of bilingual material to support curriculum, qualifications and assessment arrangements.

Curriculum Support Branch
Tony Peters
029 2082 6061
tony.peters@wales.gsi.gov.uk

Ensuring effective transition for learners between KS2 and KS3.
Improving the quality of provision and learners' attainment in curriculum areas including PE and School Sports and MFL.
Promoting Financial Literacy

Head of Qualifications and Learning Division -

David Kitchen
029 2037 5402
david.kitchen@wales.gsi.gov.uk

PA Kay Rowlands
029 2037 5457
kay.rowlands@wales.gsi.gov.uk

External subject experts -
See Annex 1

Head of General Qualifications and Modernisation Branch

Julian Pritchard 029 2037 5444
julian.pritchard@wales.gsi.gov.uk

Keeping general qualifications (GQs) under statutory review and developing new GQs.
Statutory regulation of GQs and GQ awarding bodies – accreditation, monitoring and complaints.
Monitoring the need for Welsh medium qualifications and extending the range of provision as required.
Access to GQs for learners with disabilities under the Disability Discrimination Act.
Statutory approval of all qualifications outside HE.
ICT subject expertise for 3-19 provision, e-assessment, e-regulation.
Piloting and implementation of the Welsh Baccalaureate Qualification.
Supporting modernising of the examinations system.
Facility Management & Administrative support for Castle Buildings and Southgate

Head of VQ Regulation and Quality Assurance Branch

Kim Ebrahim 029 2037 5459
kim.ebrahim@wales.gsi.gov.uk

Statutory regulation of Vocational key, basic and entry level qualifications and VQ Awarding bodies - accreditation, monitoring and complaints.
Quality assurance of Learning Outcomes outside statutory regulation within the CQFW.
National Occupational Standards and Sector Qualifications Strategies.
European developments in vocational qualifications
Vocational, key basic and entry level qualifications available in the Welsh medium.

Head of Vocational Qualifications and Credit Development Branch

Kate Crabtree 029 2037 5493
kate.crabtree@wales.gsi.gov.uk

On-going implementation and development credit and the CQFW.
Ensuring vocational, Key, basic and entry level qualifications offered in and developed for Wales meet stakeholder, learners and employers needs.
Keeping vocational , key, basic and entry level qualifications under statutory review and developing new ones.
Access to vocational, key, basic and entry level qualifications for learners with disabilities (under DDA) and other additional needs.

QCLI Group - Learning Improvement & Professional Development Division

Head of Learning Improvement & Professional Development Division
 Helen Arthur (Acting)
 029 2080 1405
 helen.arthur@wales.gsi.gov.uk

PA
 Pauline Lenahan
 029 2080 1331
 pauline.lenahan@wales.gsi.gov.uk

Practitioner Training Branch
 Alun Huws
 029 2082 3728
 alun.huws@Wales.gsi.gov.uk

To advise and lead developments related to the initial training needs of all practitioners in all learning settings.

Professional Development Branch
 Sue Lovell
 029 2082 6116
 sue.lovell@wales.gsi.gov.uk
 C/o Rhian Watcyn Jones

To advise and lead the development of continuing professional development for practitioners in all learning settings, and liaison with the GTCW.

Leadership and Management Branch
 George Walker
 01745 538567
 george.walker@wales.gsi.gov.uk

To advise and lead developments on leadership and management programmes in all learning settings

Workforce Planning/ Remodelling Branch
 Rhian Watcyn Jones
 029 2082 5222
 rhian.jones@wales.gsi.gov.uk

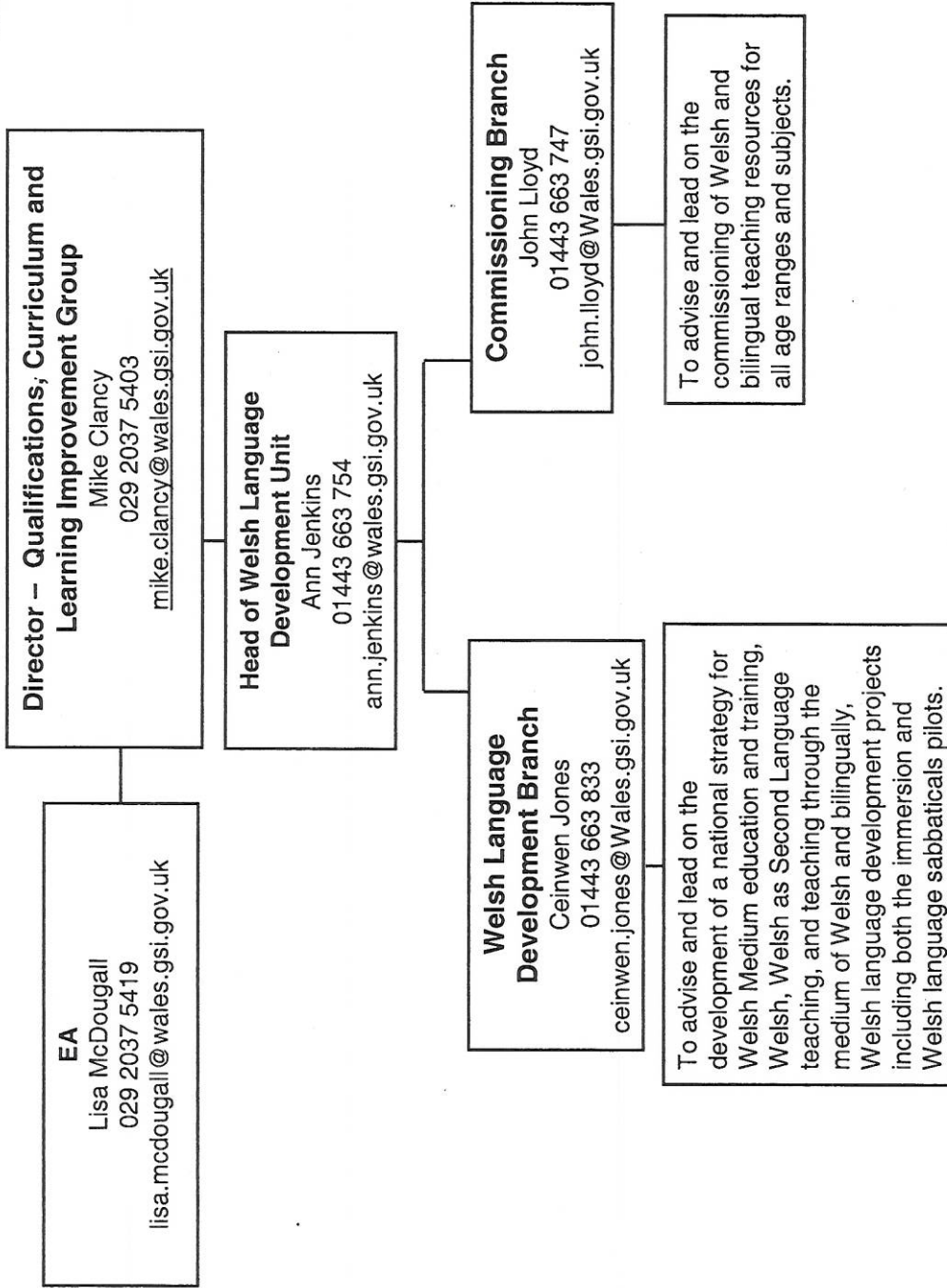
To advise and lead on the Welsh Assembly Government's commitments under the School Workload Agreement including Performance Management, the GTCW Professional Development Framework for Teachers and career pathways for School Support Staff.

Learning and Teaching Strategies Branch
 Vacant

To advise and lead the National Pedagogy Initiative including programmes to support the embedding of Key and Basic Skills in all learning.
 Development of induction and EPD arrangements

ICT Strategy Branch
 Kerry Darke
 029 2082 6019
 kerry.darke@Wales.gsi.gov.uk

To drive forward the development and implementation of the ICT Strategy and to promote effective use of ICT and e-learning.



**Area Team South
Wales**

QCLI GROUP DIRECTOR

Area Director
Gwen E Parry
01443 663 791
gwen.parry@wales.gsi.gov.uk

PA
Beverley Morris / Tanya Richards
01443 663796
beverley.morris@wales.gsi.gov.uk
/ tanya.richards@wales.gsi.gov.uk

Head of Network Development Branch
Heather Ross
01443 663865
heather.ross@wales.gsi.gov.uk

Senior Network Development Manager
Mike Kendall
01433 663916
michael.kendal@wales.gsi.gov.uk

Review the optimum configuration of learning provision and to plan for improvements, including reconfiguration and Pathfinder activity in light of the Webb Review and the action plan arising from the *Skills that Work for Wales* strategy; provide intelligence on skills demand and need to contribute to funding priorities; promote the integration of activity and the benefits of collaboration; identify opportunities to deliver the Department's agenda and improve outcomes for learners; Promote FE and Work Based Learning network development; working with partnerships, including inputting into spatial planning groups to ensure the Department's agenda is advanced; and Supporting external partners and stakeholders.

Head of Implementation and Delivery Branch -
Brian Foster
01433 663666
brian.foster@wales.gsi.gov.uk

Senior Implementation Manager Vacant

Represent DCELLS on local authority-led Children and Young People's Partnerships to support WAG policies and to engage with the planning process especially with regard to post-14 provision; contribute to the local and regional development 14-19 Learning Pathways networks and undertake assessment of provision; engage with local consortia on implementing the effectiveness framework; regional development and implementation of the youth services strategy; and contribute to local authority-led school governor support programmes, as appropriate.

Head of Performance Improvement Branch
Nick Lee
029 2092 6054
nick.lee@wales.gsi.gov.uk

Senior Performance Improvement Manager
Tanya Wigfall
01443 663685
tanya.wigfall@wales.gsi.gov.uk

Undertake Provider Performance Reviews; assess provider strategic and operational plans; provide area and institutional inspections support, for example by working with Estyn; and improve provider governance and the curriculum offer.

Area Office Manager
(Shared with South-East Wales) Jane Leek
01433 663 769
jane.leek@wales.gsi.gov.uk

Manage all aspects of the Area Office including facilities, reception and administrative support

External Subject Experts: April 2008 - March 2009

Name	Subject / Area of expertise
Bridget Smith	Modern Foreign Languages
Carole Raymond	Physical Education
Elin Jones	History
Gareth Owen	Art and Design
Janet Bond	Geography
Marj Page	English 14-19
Robin H Jones	Design and Technology
Stuart Jones	Science 14-19
Sue Cottrell	Music
Julia Fardy	Developing Thinking & Assessment for Learning
Marjorie Sheen	Primary and Foundation Phase
Mark Lancett	PSE
Val Scott	Number Skills

For contact details please telephone 029 2037 5489